

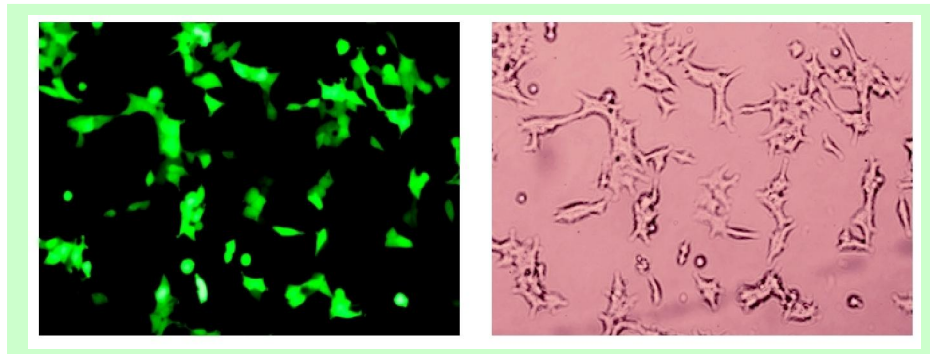


## 293-GFP stable cell line manual

| Catalog Number | Amount  | Storage         |
|----------------|---|-----------------|
| SC001          | 1 vial of cells ( $2 \times 10^6$ cells) in 80% DMEM, 10% FBS, 10% DMSO | Liquid nitrogen |

### Product Description

The 293 Cell Line is a permanent line established from primary embryonal human kidney transformed with sheared human adenovirus type 5 DNA. The expressed E1A adenovirus gene allows these cells to produce very high levels of protein. 293-GFP cell is transformed from the 293 cell line and stably expresses GFP gene. It is established by transduction of GFP expression lentivirus that also contains a blasticidin-resistant gene for selection and maintenance of the stable cells. GFP is constitutively expressed in high-level under CMV promoter (**Note:** GFP is expressed without any tags. For His-tagged GFP expressing cell line, please refer to cell line, Cat#: [SC009](#)). Each cell demonstrates strong fluorescent signal under microscope (see image below).



GFP filter (Ex490nm/Em525nm)

Bright field

### Culture procedures

1. Thaw the frozen vial of cells quickly in a 37°C water bath (1~3min), decontaminate the outside of the vial with 70% ethanol.
2. Transfer the entire contents of the cryovial into a T-75 cm<sup>2</sup> flask containing 15 ml of pre-warmed complete medium. Incubate the cells overnight in a 37°C incubator, 5% CO<sub>2</sub>.
3. The following day, replace the medium with 15 ml of prewarmed, complete medium (Optional: add 10 µg/ml blasticidin in medium).
4. Incubate the cells and monitor cell density.
5. Pass cells (1:10 dilution) when the culture reaches 80-90% confluent.
6. Freeze cells at a density of  $3 \times 10^6$  cells/ml using 90% complete medium with 10% DMSO.



**GenTarget Inc**

9865 Mesa Rim Rd # 207  
San Diego, CA 92121  
Phone: (858) 6788683  
Email: [orders@gentarget.com](mailto:orders@gentarget.com)  
Fax: 1-800-380-4198

---

### **Complete medium**

D-MEM (high glucose)  
2mM L-glutamine  
10% Fetal Bovine Serum (FBS)  
0.1 mM MEM Non-Essential Amino Acids (NEAA)  
1% Pen-strep (optinal)

### **Quality Control**

Each vial contains greater than  $2 \times 10^6$  cells with >95% viability before freeze. Cells are tested free of bacteria, viruses, mycoplasma.

### **Warranty**

This product is warranted to perform as described when used in accordance with this manual. Gentarget's sole remedy for breach of warranty should be, at the option of Gentarget, to repair or replace the product. This product is for research use only.