



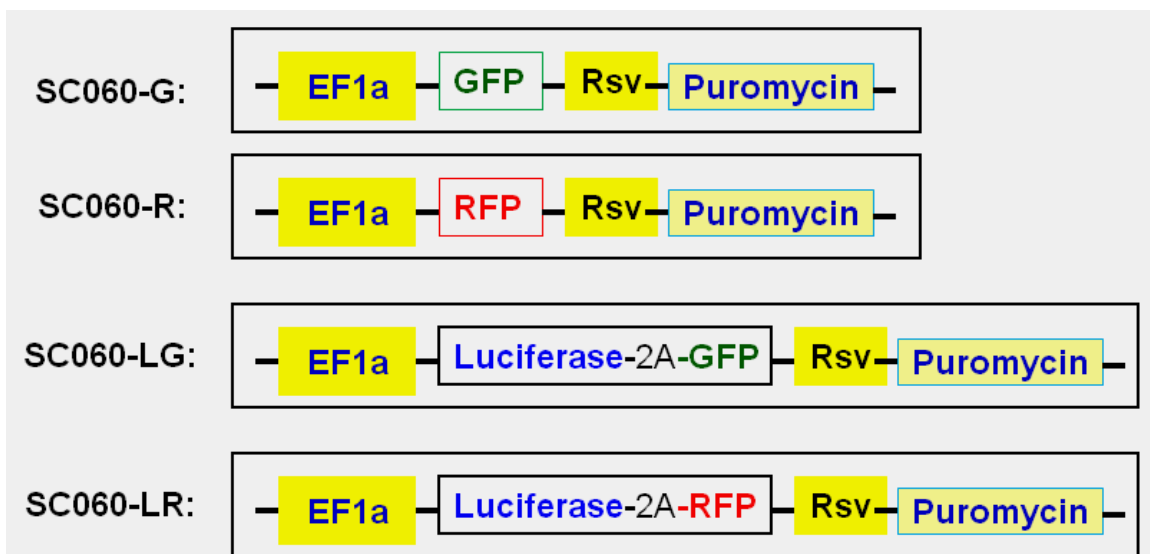
## Human B Lymphocyte Reporter Cell Lines

Catalog Number	Product Name	Amount
<a href="#">SC060-R</a>	Human B lymphocyte / RFP Stable Cells	1.0 ml / vial  (3~5 x 10 <sup>6</sup> cells) in 90% completed medium, 10% DMSO
<a href="#">SC060-G</a>	Human B lymphocyte / GFP Stable Cells	
<a href="#">SC060-LG</a>	Human B lymphocyte (Luciferase / GFP) Stable Cells	
<a href="#">SC060-LR</a>	Human B lymphocyte (Luciferase / RFP) Stable Cells	

### Product Description

This human B lymphoblast is human peripheral blood cell line, derived from peripheral blood of a 61 year old male with multiple myeloma. The cells express glucocorticoid receptor, and produce and secrete immunoglobulin lambda light chain, but not heavy chains. It is often used as valuable tools for elucidating the mechanisms of action of glucocorticoids and the development of new therapeutics.

Gentarget generates four signal cell lines from a human B Lymphocyte host cells (RPMI 8226), transformed by lentivirus transduction, carry a **Puromycin**-resistance. Each cell line stably expresses a fluorescent reporter (**GFP** or **RFP**) or co-expresses firefly luciferase and fluorescent dual reporter (**Luc / GFP** or **Luc / RFP**), mediated by the 2A element under the same EF1a promoter.

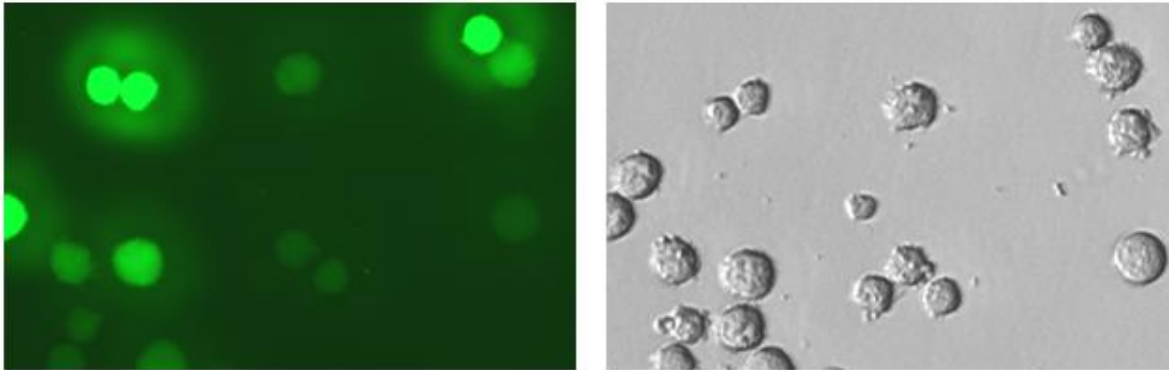




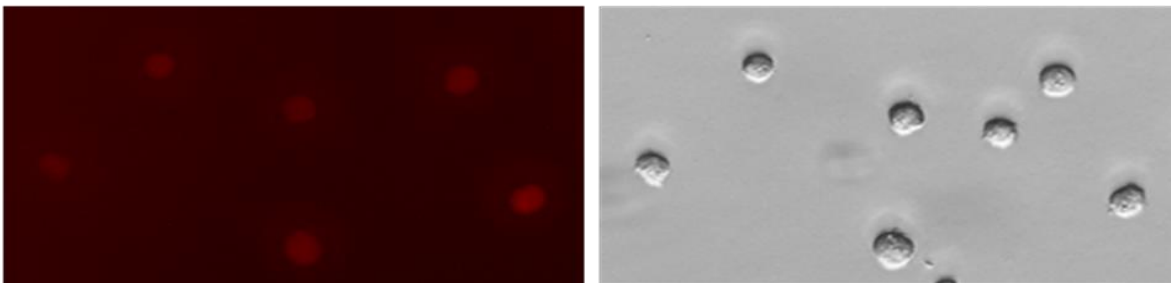
The report(s) is constitutively expressed at high-levels under the Enhance EF1a promoter. The expression cassette was integrated into each cell's genome (see the scheme above).

The cell line demonstrates strong GFP or RFP fluorescent signal under microscope, at filter wavelength Ex/EM: 460nm/ 525nm or 575nm / 610nm, for GFP or RFP respectively. (see image below). **Note:** This cell line is the pool of multiple cell clones and the fluorescent signal intensity is different among cells.

## SC060-G: Human B-Lymphocyte / GFP Cells



## SC060-R: Human B-Lymphocyte / RFP Cells



For **SC060-LG** and **SC060-LR** cell line, the cells also express high level of firefly luciferase whose signal can be detected by luciferase assay via its D-luciferin substrate.

### Culture procedures

- Thaw the vial of frozen cells quickly in a 37 °C water bath (1-3min); decontaminate the outside of the vial with 75% ethanol.



- Transfer the entire contents of the cryo-vial into a T-75 cm<sup>2</sup> flask for suspension cells, containing 20 ml of pre-warmed complete medium. Incubate the cells overnight in a 37 °C incubator, 5% CO<sub>2</sub>.
- Incubate the cells and monitor cell density. Subculture cells before they reach confluence
- Maintain cell culture by diluted into fresh medium and dispensing into new flasks. Make 1:4 dilution when the culture reaches 1 ~ 2 x 10<sup>6</sup> cells/ml.
- Freeze cells at a density of 1-3 x 10<sup>6</sup> cells/ml using 90% complete medium with 10% DMSO.

## Complete medium

- RPMI-1640
- 2mM Glutamine,
- 10% Fetal Bovine Serum (FBS), heat inactivated;
- 1% Pen-strep (or 1% Antibiotic/antmycotic);
- Optional to add: final **0.3125 ug/ml** of Puromycin (Note: do not add puromycin at 1st thaw culture. This final Puromycin concentration is also depend on the potency of puromycin)

## Quality Control

Each vial contains ~2 x 10<sup>6</sup> cells with >95% viability before freezing. Cells are verified to be free of bacteria, viruses, and mycoplasma.

## Warranty and user terms

1. This product is warranted to perform as described when used in accordance with this manual. GenTarget, Inc. MAKES NO REPRESENTATIONS AND EXTENDS NO WARRANTIES OF ANY KIND, EITHER EXPRESS OR IMPLIED. GenTarget's sole remedy for breach of warranty should be, at the option of GenTarget, to repair or replace the product if this product does not meet the stated quality standard.
2. By paying the purchase price, the buyer is granted a non-transferable, non-exclusive license to use the product. This product is sold **for research and development purposes only**.
3. This product is limited to the laboratory that the product is delivered to. This Product is not for resale, distribution, or transfer for any purpose, including transfer of the Product as a component of any products. GenTarget will retain all rights for this Product's license and other intellectual property.
4. This Product should be used only for non-profit purposes, including any products and services usages. Furthermore, **research use only** means that



this product is excluded, without limitation, from resale, repackaging, or modification for the purpose of making or selling of any commercial products or services without the written approval of GenTarget. You may contact our Business Development department at [support@gentarget.com](mailto:support@gentarget.com) for product proprietary information.

5. GenTarget is not liable, and does not have any responsibility or liability, whatsoever for any direct and indirect, consequential, or other damages resulting from using this Product.
6. GenTarget **do not** provide the protected reporter's sequences information for all our cell line products unless a license was purchased.

**Attachment:** GenTarget's pre-made stable cell line list:

<b>Catalog #</b>	<b>Product Name</b>
<a href="#">SC001</a>	HEK293-GFP stable cells
<a href="#">SC002-Bsd</a>	luciferase (firefly), HEK293 stable cells (Blasticidin)
<a href="#">SC002-GB</a>	luciferase (firefly), HEK293 stable cells (GFP-Blasticidin)
<a href="#">SC002-GP</a>	luciferase (firefly), HEK293 stable cells (GFP-Puromycin)
<a href="#">SC002-Neo</a>	luciferase (firefly), HEK293 stable cells (Neomycin)
<a href="#">SC002-Puro</a>	luciferase (firefly), HEK293 stable cells (Puromycin)
<a href="#">SC002-RB</a>	luciferase (firefly), HEK293 stable cells (RFP, Blasticidin)
<a href="#">SC002-RP</a>	luciferase (firefly), HEK293 stable cells (RFP-Puromycin)
<a href="#">SC002T-RP</a>	HEK293T / Luciferase stable cells (RFP-Puromycin)
<a href="#">SC003</a>	LacZ (6His, RFP) / HEK293 Expression stable cell line
<a href="#">SC004-Bsd</a>	CRE Expression / HEK293 Cell Line (Bsd)
<a href="#">SC004-GP</a>	CRE Expression / HEK293 Cell Line (GFP, Puro)
<a href="#">SC004-Neo</a>	CRE Expression / HEK293 Cell Line (Neo)
<a href="#">SC004-Puro</a>	CRE Expression / HEK293 Cell Line (Puro)
<a href="#">SC004-RB</a>	CRE Expression / HEK293 Cell Line (RFP, Bsd)
<a href="#">SC004-RP</a>	CRE Expression / HEK293 Cell Line (RFP, Puro)



<a href="#">SC005-Bsd</a>	HEK293-TetR (Bsd)
<a href="#">SC005-GB</a>	HEK293-TetR (GFP-Bsd)
<a href="#">SC005-Hygro</a>	HEK293-TetR (Hygro)
<a href="#">SC005-Neo</a>	HEK293-TetR (Neo)
<a href="#">SC005-Puro</a>	HEK293-TetR (Puro)
<a href="#">SC005-RB</a>	HEK293-TetR (RFP-Bsd)
<a href="#">SC005-RP</a>	HEK293-TetR (RFP-Puro)
<a href="#">SC006</a>	Flp recombinase Expression HEK293 stable cell
<a href="#">SC007</a>	HEK293-RFP stable cells
<a href="#">SC008</a>	GFP-LacZ & RFP Expression HEK293 Cell Line
<a href="#">SC009</a>	GFP & RFP / HEK293 stable cells
<a href="#">SC010</a>	HEK293-CFP stable cells
<a href="#">SC011</a>	HEK293-YFP stable cells
<a href="#">SC012</a>	TAT Expression / HEK293 Cell Line
<a href="#">SC013</a>	Glutamine Synthetase (6His) Expression HEK293 Cell Line
<a href="#">SC014</a>	human P53 Inducible Expression Cell line
<a href="#">SC015</a>	Human OCT3/4 Expression Stable cells
<a href="#">SC016</a>	Human LIN28 Expression stable cells
<a href="#">SC018-Bsd</a>	Color Switch, CRE report cell line: HEK293-loxP-GFP-RFP (Bsd)
<a href="#">SC018-Neo</a>	Color Switch, CRE report cell line: HEK293-loxP-GFP-RFP (Neo)
<a href="#">SC018-Puro</a>	Color Switch, CRE report cell line: HEK293-loxP-GFP-RFP (Puro)
<a href="#">SC020-Puro</a>	luciferase (Renilla), HEK293 stable cells (Puromycin)
<a href="#">SC020-RP</a>	luciferase (Renilla), HEK293 stable cells (RFP-Puromycin)
<a href="#">SC021-GB</a>	Luciferase (firefly) & CRE Expression cell line (GFP-Bsd)
<a href="#">SC021-Puro</a>	Luciferase (firefly) & CRE Expression stable cell line (Puro)
<a href="#">SC021-RP</a>	Luciferase (firefly) & CRE Expression cell line (RFP-Puro)



<a href="#">SC022-RB</a>	HEK293-CFTR cell line with RFP and Blasticidin dual marker
<a href="#">SC023-RB</a>	HEK293-CLCN2 cell line with RFP and Blasticidin dual marker
<a href="#">SC024-RB</a>	HEK293-TRPC3 cell line with RFP and Puromycin dual marker
<a href="#">SC025-RB</a>	HEK293-KCNN4 cell line with RFP and Puromycin dual marker
<a href="#">SC026-RB</a>	HEK293-ATP2B2 cell line with RFP and Puromycin dual marker
<a href="#">SC027-RB</a>	HEK293-TRPV1 cell line with RFP and Puromycin dual marker
<a href="#">SC028</a>	Inducible RFP HEK293 Expression cell line
<a href="#">SC029</a>	inducible RFP HEK293 stable cell line with GFP marker
<a href="#">SC030</a>	inducible GFP HEK293 stable cell line with RFP marker
<a href="#">SC031-Puro</a>	Hela-RFP Expression Cells
<a href="#">SC032-Bsd</a>	Luciferase (firefly) Expression Hela cells (Bsd)
<a href="#">SC032-GB</a>	Luciferase & GFP Expression Hela cells (Bsd)
<a href="#">SC032-GN</a>	Luciferase & GFP Expression Hela cells (Neo)
<a href="#">SC032-GP</a>	Luciferase & GFP Expression Hela cells (Puro)
<a href="#">SC032-Puro</a>	Luciferase (firefly) Expression Hela cells (Puro)
<a href="#">SC032-RB</a>	Luciferase & RFP Expression Hela cells (Bsd)
<a href="#">SC032-RN</a>	Luciferase & RFP Expression Hela cells (Neo)
<a href="#">SC032-RP</a>	Luciferase & RFP Expression Hela cells (Puro)
<a href="#">SC033</a>	Inducible GFP HEK293 stable cell line
<a href="#">SC034-Bsd</a>	Hela-GFP stable cells (Blasticidin)
<a href="#">SC034-Puro</a>	Hela-GFP stable cells (Puromycin)
<a href="#">SC035-Puro</a>	TetR Expression (Puro) / Hela stable cells
<a href="#">SC036</a>	Inducible GFP Expression Hela cell line
<a href="#">SC037</a>	Inducible RFP Expression Hela cell line
<a href="#">SC038-GB</a>	rtTA (GFP-Bsd) / Hela stable cells



<a href="#">SC038-GP</a>	rtTA (GFP-Puro) / Hela stable cells
<a href="#">SC038-RB</a>	rtTA (RFP-Bsd) / Hela stable cells
<a href="#">SC039-Bsd</a>	CHO-GFP stable cells (Blasticidin)
<a href="#">SC039-Puro</a>	CHO-GFP stable cells (Puromycin)
<a href="#">SC040-Bsd</a>	MDA-MB-231 / GFP (Bsd) Stable Cell Line
<a href="#">SC040-Puro</a>	MDA-MB-231 / GFP (Puro) Stable Cell Line
<a href="#">SC040-TetR</a>	MDA-MB-231 / TetR (Puro) stable cells
<a href="#">SC041</a>	MDA-MB-231 / Luciferase-2A-RFP Stable Cell Line
<a href="#">SC042</a>	SH-SY5Y / GFP (Puromycin) stable cell line
<a href="#">SC043-Bsd</a>	A549 / GFP stable cells (Blasticidin)
<a href="#">SC043-Cas9-GP</a>	A549 / Cas9 (GFP-Puro) Stable Cell Line
<a href="#">SC043-Cas9-Puro</a>	A549 / Cas9 (Puro) Stable Cell Line
<a href="#">SC043-Cas9-RP</a>	A549 / Cas9 (RFP-Puro) Stable Cell Line
<a href="#">SC043-LG</a>	A549 / Luciferase-2A-GFP (Puromycin) stable cell line
<a href="#">SC043-Luc</a>	A549 / Luciferase (Puromycin) stable cell line
<a href="#">SC043-TetR</a>	A549 / TetR (Puro) stable cells
<a href="#">SC044</a>	MDA-MB-231 / Luciferase-2A-GFP Stable Cell Line
<a href="#">SC045-Cas9-Bsd</a>	Hela / Cas9 (Bad) Stable Cell Line
<a href="#">SC046</a>	SH-SY5Y / RFP (Puromycin) stable cell line
<a href="#">SC047-GB</a>	RKO / GFP (Blasticidin) Stable Cell Line
<a href="#">SC047-TetR</a>	TetR Expression (Bsd) / RKO stable cells
<a href="#">SC048</a>	Luciferase (Puro) / Jurkat T Cell line
<a href="#">SC049-1</a>	Jurkat T / GFP Stable Cell (EF1a Promoter)
<a href="#">SC049-2</a>	Jurkat T / GFP Stable Cell (Flt1 Promoter)
<a href="#">SC049-3</a>	Jurkat T / GFP Stable Cell (CD43 Promoter)
<a href="#">SC049-4</a>	Jurkat T / GFP Stable Cell (CD68 Promoter)



<a href="#">SC049-5</a>	Jurkat T / GFP Stable Cell (Survivin Promoter)
<a href="#">SC050-G</a>	MCF7 / GFP (Puromycin) Cell Line
<a href="#">SC050-L</a>	MCF7 / Firefly Luciferase (Puro) Cell Line
<a href="#">SC051-G</a>	ZR-75-1 / GFP (Puromycin) Cell Line
<a href="#">SC051-L</a>	ZR-75-1 / Firefly Luciferase (Puro) Cell Line
<a href="#">SC053-L</a>	NCI-H1299 / Luciferase (Puro) Stable Cells
<a href="#">SC054-L</a>	CFPAC-1 / Luciferase (Puro) Stable Cells
<a href="#">SC055-G</a>	MLLB2 / GFP (Neomycin) stable cell line
<a href="#">SC056-TetR</a>	mouse CT26 / TetR Expression (Bsd) stable cells
<a href="#">SC057-Bsd</a>	MDA-MB-231 / RFP (Bsd) Stable Cell Line
<a href="#">SC058</a>	HEK293 / uGFP (unstable GFP) Stable Cells
<a href="#">SC059-Bsd</a>	MDA-MB-231 / Luciferase (Bsd) Stable Cell Line
<a href="#">SC059-Puro</a>	MDA-MB-231 / Luciferase (Puro) Stable Cell Line
<a href="#">SC060-G</a>	Human B lymphocyte / GFP Stable Cells
<a href="#">SC060-LG</a>	Human B lymphocyte (Luciferase / GFP) Stable Cells
<a href="#">SC060-LR</a>	Human B lymphocyte (Luciferase / RFP) Stable Cells
<a href="#">SC060-R</a>	Human B lymphocyte / RFP Stable Cells
<a href="#">SC061-G</a>	Mouse CT26 / GFP Stable Cells
<a href="#">SC061-LG</a>	Mouse CT26 (Luciferase & GFP) Stable Cells
<a href="#">SC061-LR</a>	Mouse CT26 (Luciferase & RFP) Stable Cells
<a href="#">SC061-PDL1</a>	Mouse CT26 / PDL1 Stable Cells
<a href="#">SC061-R</a>	Mouse CT26 / RFP Stable Cells
<a href="#">SC062-G</a>	Human AsPC1 / GFP Cell Line
<a href="#">SC062-LG</a>	Human AsPC1 / Luciferase and GFP Cell Line
<a href="#">SC062-LR</a>	Human AsPC1 / Luciferase and RFP Cell Line
<a href="#">SC062-Luc</a>	Human AsPC1 / Luciferase Cell Line





<a href="#">SC062-R</a>	Human AsPC1 / RFP Cell Line
<a href="#">SC063-LR</a>	Mouse B lymphocyte (Luciferase & RFP) Stable Cell
<a href="#">SC063-Luc</a>	Mouse B lymphocyte / Luciferase Cell Line
<a href="#">SC063-R</a>	Mouse B lymphocyte / RFP Cell Line
<a href="#">SC064-G</a>	Human HaCAT / GFP (Puro) Cell Line
<a href="#">SC064-TetR</a>	Human HaCAT / TetR (Bsd) Cell Line
<a href="#">SC065-G</a>	Mouse MB49 / GFP Stable Cells
<a href="#">SC065-LG</a>	Mouse MB49 / Luciferase & GFP Stable Cells
<a href="#">SC065-LR</a>	Mouse MB49 / Luciferase & RFP Stable Cells
<a href="#">SC065-R</a>	Mouse MB49 / RFP Stable Cells
<a href="#">SC066-G</a>	Human ES2 / GFP Stable Cells
<a href="#">SC066-LG</a>	Human ES2 / Luciferase & GFP Stable Cells
<a href="#">SC066-LR</a>	Human ES2 / Luciferase & RFP Stable Cells
<a href="#">SC066-R</a>	Human ES2 / RFP Stable Cells
<a href="#">SC066-TetR</a>	Human ES2 / TetR (Puro) Stable Cells
<a href="#">SC067-G</a>	Human SW403 / GFP Stable Cells
<a href="#">SC067-Luc</a>	Human SW403 / Luciferase Stable Cells
<a href="#">SC068-G</a>	Human PANC-1 / GFP (Puro) Cell Line
<a href="#">SC068-LG</a>	Human PANC-1 / Luciferase & GFP (Puro) Cell Line
<a href="#">SC068-Luc</a>	Human PANC-1 / Luciferase (Puro) Cell Line
<a href="#">SC068-R</a>	Human PANC-1 / RFP (Puro) Cell Line
<a href="#">SC069-G</a>	Human 786-O / GFP Cell Line
<a href="#">SC069-LG</a>	Human 786-O / Luciferase & GFP Cell Line
<a href="#">SC069-luc</a>	Human 786-O / Luciferase Cell Line
<a href="#">SC070-G</a>	Hela-nucGFP stable cells
<a href="#">SC070-R</a>	Hela-nucRFP stable cells



<a href="#">SC072-G</a>	Human T47D / GFP Stable Cells
<a href="#">SC072-LG</a>	Human T47D / Luciferase & GFP Stable Cells
<a href="#">SC072-Luc</a>	Human T47D / Luciferase Stable Cells
<a href="#">SC073-GB</a>	Human MCF10A / GFP (Bsd) Stable Cells
<a href="#">SC073-GP</a>	Human MCF10A / GFP (Puro) Stable Cells
<a href="#">SC073-Luc</a>	Human MCF10A / Luciferase (Puro) Stable Cells
<a href="#">SC074-GB</a>	Human SW1990 / GFP (Bsd) Stable Cells
<a href="#">SC074-GP</a>	Human SW1990 / GFP (Puro) Stable Cells
<a href="#">SC074-LG</a>	Human SW1990 / Luciferase & GFP (Puro) Stable Cells
<a href="#">SC074-Luc</a>	Human SW1990 / Luciferase (Puro) Stable Cells
<a href="#">SC017</a>	MDA-MB-231 / niRFP (Puro) Stable Cell Line
<a href="#">SC075</a>	Human ACE2 Expression in Hela Cell Line
<a href="#">SC076</a>	Human ACE2 Expression in HEK293T Cell Line
<a href="#">SC019</a>	Firefly & Renilla Dual Luciferase Hela Cell Line
<a href="#">SC077</a>	COVID-19 Spike (S) Protein / Hela Cell Line
<a href="#">SC071-Puro</a>	Color Switch, CRE report cell line: Hela-loxP-GFP-RFP (Puro)
<a href="#">SC071-Neo</a>	Color Switch, CRE report cell line: Hela-loxP-GFP-RFP (Neo)