



## Mouse HT22 Reporter Cell Lines

Catalog Number	Product Name	Amount
<a href="#">SC090-Luc</a>	Mouse HT22 / <b>Luciferase</b> Stable Cells	1.0 ml / vial
<a href="#">SC090-G</a>	Mouse HT22 / <b>GFP</b> Fluorescent Stable Cells	(2 x 10 <sup>6</sup> cells) in cell frozen medium

### Product Description

#### 1. Introduction:

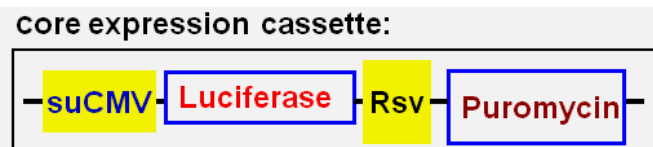
Mouse HT22 cell line was derived from adult mouse hippocampal neuronal cells. Upon differentiated, HT22 cell line become highly sensitive to glutamate-induced toxicity, thus used as used as the model system to glutamate-induced toxicity research in neuronal cells (Reference: [Neural Regen Res.](#) 2013 May 15; 8(14): 1297–1306), as well as other studies in neurons.

Gentarget generates the reporter cell lines from this **mouse HT22** host cells, transformed by lentivirus transduction, carrying a **Puromycin** (Puro) resistance. Those reporter cell lines can be tracked in vivo by fluorescent signal or / and chem-luminescence (*In Vivo* imaging), providing convenient tools for studying the mechanisms of tumor growth and metastasis, and as the therapeutic model for evaluating various treatment effects in animal.

Each cell line stably expresses either the enhanced fluorescent reporter (**GFP**) or the codon optimized **Firefly Luciferase**, under the enhanced **CMV** promoter.

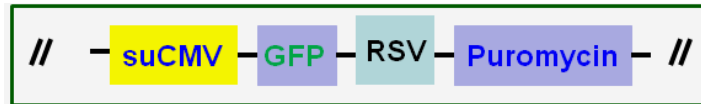
#### 2. Expression Cassettes:

1) SC090-Luc:





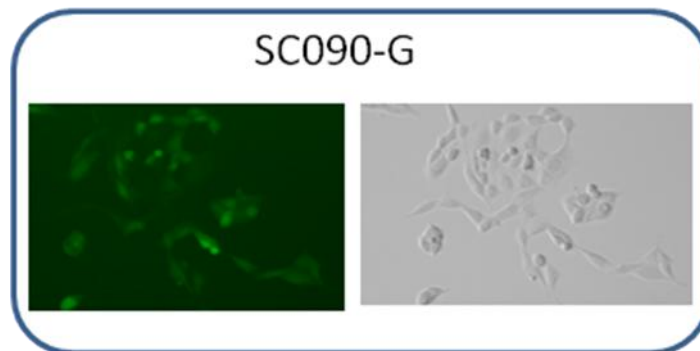
## 2) SC090-G:



The report is constitutively expressed at high levels under the enhance CMV promoter (suCMV). The scheme of each expression cassette is listed above. This cassette was integrated into each cell's genome.

### 3. Sample images:

For the Fluorescent report cell line: each cell demonstrated strong GFP Fluorescent signal, visualized under fluorescent-microscope, at filter wavelength of Ex/EM: of Ex/EM: 460nm/525nm (GFP) (See sample images below).



**Note:** This cell lines are the pool of multiple cell clones and their fluorescent signal intensity are different among cells.

### Culture procedures

1. Thaw the frozen vial of cells quickly in a 37°C water bath (1~3min), decontaminate the outside of the vial with 70% ethanol.
2. Transfer the entire contents of the cryovial into a T-75 cm<sup>2</sup> flask containing 20 ml of pre-warmed complete medium. Incubate the cells overnight in a 37°C incubator, with 5% CO<sub>2</sub>.
3. On the following day, replace the medium with 20 ml of prewarmed, complete medium.
4. Incubate the cells and monitor cell density.
5. Pass cells (1:5 to 1:10 dilution) using 0.25% Trypsin-EDTA solution when the culture reaches ~90% confluent.
6. Freeze cells at a density of 2 x 10<sup>6</sup> cells/ml using 90% complete medium with 10% DMSO.



## Complete medium

DMEM (High Glucose)  
2mM Glutamine  
1mM Pyruvate  
10% FBS  
1x Antibiotic-Antimycotic

**Note:** culture cell at 37°C incubator with 5% CO<sub>2</sub>.

- Optional to add: final **1.2 ug/ml** of Puromycin (Note: do not add puromycin at 1st thaw culture. This final Puromycin concentration is also depend on the potency of the puromycin brand)

## Quality Control

Each vial contains  $\sim 2 \times 10^6$  cells with >95% viability before freezing. Cells are verified to be free of bacteria, viruses, and mycoplasma.

## Warranty and user terms

1. This product is warranted to perform as described when used in accordance with this manual. GenTarget, Inc. MAKES NO REPRESENTATIONS AND EXTENDS NO WARRANTIES OF ANY KIND, EITHER EXPRESS OR IMPLIED. GenTarget's sole remedy for breach of warranty should be, at the option of GenTarget, to repair or replace the product if this product does not meet the stated quality standard.
2. By paying the purchase price, the buyer is granted a non-transferable, non-exclusive license to use the product. This product is sold **for research and development purposes only**.
3. This product is limited to the laboratory that the product is delivered to. This Product is not for resale, distribution, or transfer for any purpose, including transfer of the Product as a component of any products. GenTarget will retain all rights for this Product's license and other intellectual property.
4. This Product should be used only for non-profit purposes, including any products and services usages. Furthermore, **research use only** means that this product is excluded, without limitation, from resale, repackaging, or modification for the purpose of making or selling of any commercial products or services without the written approval of GenTarget. You may contact our Business Development department at [support@gentarget.com](mailto:support@gentarget.com) for product proprietary information.



5. GenTarget is not liable, and does not have any responsibility or liability, whatsoever for any direct and indirect, consequential, or other damages resulting from using this Product.
6. Gentarget **do not** provide the protected reporter's sequences information for all our cell line products unless a license was purchased.

**Attachment:** GenTarget's pre-made stable cell line list:

<b>Catalog #</b>	<b>Product Name</b>
<a href="#">TLV-C</a>	HEK293-TLV lentivirus packing cells
<a href="#">SC001</a>	HEK293-GFP stable cells
<a href="#">SC002-Bsd</a>	luciferase (firefly), HEK293 stable cells (Blasticidin)
<a href="#">SC002-GB</a>	luciferase (firefly), HEK293 stable cells (GFP-Blasticidin)
<a href="#">SC002-GP</a>	luciferase (firefly), HEK293 stable cells (GFP-Puromycin)
<a href="#">SC002-Neo</a>	luciferase (firefly), HEK293 stable cells (Neomycin)
<a href="#">SC002-Puro</a>	luciferase (firefly), HEK293 stable cells (Puromycin)
<a href="#">SC002-RB</a>	luciferase (firefly), HEK293 stable cells (RFP, Blasticidin)
<a href="#">SC002-RP</a>	luciferase (firefly), HEK293 stable cells (RFP-Puromycin)
<a href="#">SC002T-RP</a>	HEK293T / Luciferase stable cells (RFP-Puromycin)
<a href="#">SC003</a>	LacZ (6His, RFP) / HEK293 Expression stable cell line
<a href="#">SC004-Bsd</a>	CRE Expression / HEK293 Cell Line (Bsd)
<a href="#">SC004-GP</a>	CRE Expression / HEK293 Cell Line (GFP, Puro)
<a href="#">SC004-Neo</a>	CRE Expression / HEK293 Cell Line (Neo)
<a href="#">SC004-Puro</a>	CRE Expression / HEK293 Cell Line (Puro)
<a href="#">SC004-RB</a>	CRE Expression / HEK293 Cell Line (RFP, Bsd)
<a href="#">SC004-RP</a>	CRE Expression / HEK293 Cell Line (RFP, Puro)



<a href="#">SC005-Bsd</a>	HEK293-TetR (Bsd)
<a href="#">SC005-GB</a>	HEK293-TetR (GFP-Bsd)
<a href="#">SC005-Hygro</a>	HEK293-TetR (Hygro)
<a href="#">SC005-Neo</a>	HEK293-TetR (Neo)
<a href="#">SC005-Puro</a>	HEK293-TetR (Puro)
<a href="#">SC005-RB</a>	HEK293-TetR (RFP-Bsd)
<a href="#">SC005-RP</a>	HEK293-TetR (RFP-Puro)
<a href="#">SC006</a>	Flp recombinase Expression HEK293 stable cell
<a href="#">SC007</a>	HEK293-RFP stable cells
<a href="#">SC008</a>	GFP-LacZ & RFP Expression HEK293 Cell Line
<a href="#">SC009</a>	GFP & RFP / HEK293 stable cells
<a href="#">SC010</a>	HEK293-CFP stable cells
<a href="#">SC011</a>	HEK293-YFP stable cells
<a href="#">SC012</a>	TAT Expression / HEK293 Cell Line
<a href="#">SC013</a>	Glutamine Synthetase (6His) Expression HEK293 Cell Line
<a href="#">SC014</a>	mouse P53 Inducible Expression Cell line
<a href="#">SC015</a>	Mouse OCT3/4 Expression Stable cells
<a href="#">SC016</a>	Mouse LIN28 Expression stable cells
<a href="#">SC017</a>	MDA-MB-231 / niRFP (Puro) Stable Cell Line
<a href="#">SC018-Bsd</a>	Color Switch, CRE report cell line: HEK293-loxP-GFP-RFP (Bsd)
<a href="#">SC018-Neo</a>	Color Switch, CRE report cell line: HEK293-loxP-GFP-RFP Neo)
<a href="#">SC018-Puro</a>	Color Switch, CRE report cell line: HEK293-loxP-GFP-RFP (Puro)
<a href="#">SC019</a>	Firefly & Renilla Dual Luciferase Hela Cell Line



<a href="#">SC020-Puro</a>	luciferase (Renilla), HEK293 stable cells (Puromycin)
<a href="#">SC020-RP</a>	luciferase (Renilla), HEK293 stable cells (RFP-Puromycin)
<a href="#">SC021-GB</a>	Luciferase (firefly) & CRE Expression cell line (GFP-Bsd)
<a href="#">SC021-Puro</a>	Luciferase (firefly) & CRE Expression stable cell line (Puro)
<a href="#">SC021-RP</a>	Luciferase (firefly) & CRE Expression cell line (RFP-Puro)
<a href="#">SC022-RB</a>	HEK293-CFTR cell line with RFP and Blasticidin dual marker
<a href="#">SC023-RB</a>	HEK293-CLCN2 cell line with RFP and Blasticidin dual marker
<a href="#">SC024-RB</a>	HEK293-TRPC3 cell line with RFP and Puromycin dual marker
<a href="#">SC025-RB</a>	HEK293-KCNN4 cell line with RFP and Puromycin dual marker
<a href="#">SC026-RB</a>	HEK293-ATP2B2 cell line with RFP and Puromycin dual marker
<a href="#">SC027-RB</a>	HEK293-TRPV1 cell line with RFP and Puromycin dual marker
<a href="#">SC028</a>	Inducible RFP HEK293 Expression cell line
<a href="#">SC029</a>	inducible RFP HEK293 stable cell line with GFP marker
<a href="#">SC030</a>	inducible GFP HEK293 stable cell line with RFP marker
<a href="#">SC031-Puro</a>	Hela-RFP Expression Cells
<a href="#">SC032-Bsd</a>	Luciferase (firefly) Expression Hela cells (Bsd)
<a href="#">SC032-GB</a>	Luciferase & GFP Expression Hela cells (Bsd)
<a href="#">SC032-GN</a>	Luciferase & GFP Expression Hela cells (Neo)
<a href="#">SC032-GP</a>	Luciferase & GFP Expression Hela cells (Puro)
<a href="#">SC032-Puro</a>	Luciferase (firefly) Expression Hela cells (Puro)
<a href="#">SC032-RB</a>	Luciferase & RFP Expression Hela cells (Bsd)
<a href="#">SC032-RN</a>	Luciferase & RFP Expression Hela cells (Neo)
<a href="#">SC032-RP</a>	Luciferase & RFP Expression Hela cells (Puro)



<a href="#">SC033</a>	Inducible GFP HEK293 stable cell line
<a href="#">SC034-Bsd</a>	Hela-GFP stable cells (Blasticidin)
<a href="#">SC034-Puro</a>	Hela-GFP stable cells (Puromycin)
<a href="#">SC035-Puro</a>	TetR Expression (Puro) / Hela stable cells
<a href="#">SC036</a>	Inducible GFP Expression Hela cell line
<a href="#">SC037</a>	Inducible RFP Expression Hela cell line
<a href="#">SC038-GB</a>	rtTA (GFP-Bsd) / Hela stable cells
<a href="#">SC038-GP</a>	rtTA (GFP-Puro) / Hela stable cells
<a href="#">SC038-RB</a>	rtTA (RFP-Bsd) / Hela stable cells
<a href="#">SC039-Bsd</a>	CHO-GFP stable cells (Blasticidin)
<a href="#">SC039-Puro</a>	CHO-GFP stable cells (Puromycin)
<a href="#">SC040-Bsd</a>	MDA-MB-231 / GFP (Bsd) Stable Cell Line
<a href="#">SC040-Puro</a>	MDA-MB-231 / GFP (Puro) Stable Cell Line
<a href="#">SC040-TetR</a>	MDA-MB-231 / TetR (Puro) stable cells
<a href="#">SC041</a>	MDA-MB-231 / Luciferase-2A-RFP Stable Cell Line
<a href="#">SC042</a>	SH-SY5Y / GFP (Puromycin) stable cell line
<a href="#">SC043-Bsd</a>	A549 / GFP stable cells (Blasticidin)
<a href="#">SC043-Cas9-GP</a>	A549 / Cas9 (GFP-Puro) Stable Cell Line
<a href="#">SC043-Cas9-Puro</a>	A549 / Cas9 (Puro) Stable Cell Line
<a href="#">SC043-Cas9-RP</a>	A549 / Cas9 (RFP-Puro) Stable Cell Line
<a href="#">SC043-LG</a>	A549 / Luciferase-2A-GFP (Puromycin) stable cell line
<a href="#">SC043-Luc</a>	A549 / Luciferase (Puromycin) stable cell line
<a href="#">SC043-TetR</a>	A549 / TetR (Puro) stable cells
<a href="#">SC044</a>	MDA-MB-231 / Luciferase-2A-GFP Stable Cell Line



<a href="#">SC045-Cas9-Bsd</a>	Hela / Cas9 (Bsd) Stable Cell Line
<a href="#">SC045-Cas9-Puro</a>	Hela / Cas9 (Puro) Stable Cell Line
<a href="#">SC046</a>	SH-SY5Y / RFP (Puromycin) stable cell line
<a href="#">SC047-GB</a>	RKO / GFP (Blasticidin) Stable Cell Line
<a href="#">SC047-TetR</a>	TetR Expression (Bsd) / RKO stable cells
<a href="#">SC048</a>	Luciferase (Puro) / Jurkat T Cell line
<a href="#">SC049-1</a>	Jurkat T / GFP Stable Cell (EF1a Promoter)
<a href="#">SC049-2</a>	Jurkat T / GFP Stable Cell (Flt1 Promoter)
<a href="#">SC049-3</a>	Jurkat T / GFP Stable Cell (CD43 Promoter)
<a href="#">SC049-4</a>	Jurkat T / GFP Stable Cell (CD68 Promoter)
<a href="#">SC049-5</a>	Jurkat T / GFP Stable Cell (Survivin Promoter)
<a href="#">SC050-G</a>	MCF7 / GFP (Puromycin) Cell Line
<a href="#">SC050-L</a>	MCF7 / Firefly Luciferase (Puro) Cell Line
<a href="#">SC051-G</a>	ZR-75-1 / GFP (Puromycin) Cell Line
<a href="#">SC051-L</a>	ZR-75-1 / Firefly Luciferase (Puro) Cell Line
<a href="#">SC051-R</a>	ZR-75-1 / RFP (Puromycin) Cell Line
<a href="#">SC051-LG</a>	ZR-75-1 / Luciferase & GFP Cell Line
<a href="#">SC051-LR</a>	ZR-75-1 / Luciferase & RFP Cell Line
<a href="#">SC053-L</a>	NCI-H1299 / Luciferase (Puro) Stable Cells
<a href="#">SC054-L</a>	CFPAC-1 / Luciferase (Puro) Stable Cells
<a href="#">SC055-G</a>	MLLB2 / GFP (Neomycin) stable cell line
<a href="#">SC056-TetR</a>	mouse CT26 / TetR Expression (Bsd) stable cells
<a href="#">SC057-Bsd</a>	MDA-MB-231 / RFP (Bsd) Stable Cell Line





<a href="#">SC058</a>	HEK293 / uGFP (unstable GFP) Stable Cells
<a href="#">SC059-Bsd</a>	MDA-MB-231 / Luciferase (Bsd) Stable Cell Line
<a href="#">SC059-Puro</a>	MDA-MB-231 / Luciferase (Puro) Stable Cell Line
<a href="#">SC060-G</a>	Mouse B lymphocyte / GFP Stable Cells
<a href="#">SC060-LG</a>	Mouse B lymphocyte (Luciferase / GFP) Stable Cells
<a href="#">SC060-LR</a>	Mouse B lymphocyte (Luciferase / RFP) Stable Cells
<a href="#">SC060-R</a>	Mouse B lymphocyte / RFP Stable Cells
<a href="#">SC061-G</a>	Mouse CT26 / GFP Stable Cells
<a href="#">SC061-LG</a>	Mouse CT26 (Luciferase & GFP) Stable Cells
<a href="#">SC061-LR</a>	Mouse CT26 (Luciferase & RFP) Stable Cells
<a href="#">SC061-PDL1</a>	Mouse CT26 / PDL1 Stable Cells
<a href="#">SC061-R</a>	Mouse CT26 / RFP Stable Cells
<a href="#">SC062-G</a>	Mouse AsPC1 / GFP Cell Line
<a href="#">SC062-LG</a>	Mouse AsPC1 / Luciferase and GFP Cell Line
<a href="#">SC062-LR</a>	Mouse AsPC1 / Luciferase and RFP Cell Line
<a href="#">SC062-Luc</a>	Mouse AsPC1 / Luciferase Cell Line
<a href="#">SC062-R</a>	Mouse AsPC1 / RFP Cell Line
<a href="#">SC063-LR</a>	Mouse B lymphocyte (Luciferase & RFP) Stable Cell
<a href="#">SC063-Luc</a>	Mouse B lymphocyte / Luciferase Cell Line
<a href="#">SC063-R</a>	Mouse B lymphocyte / RFP Cell Line
<a href="#">SC065-G</a>	Mouse MB49 / GFP Stable Cells
<a href="#">SC065-Luc</a>	Mouse MB49 / Luciferase (firefly) Stable Cells
<a href="#">SC065-LG</a>	Mouse MB49 / Luciferase & GFP Stable Cells
<a href="#">SC065-LR</a>	Mouse MB49 / Luciferase & RFP Stable Cells



<a href="#">SC065-R</a>	Mouse MB49 / RFP Stable Cells
<a href="#">SC066-G</a>	Mouse ES2 / GFP Stable Cells
<a href="#">SC066-LG</a>	Mouse ES2 / Luciferase & GFP Stable Cells
<a href="#">SC066-LR</a>	Mouse ES2 / Luciferase & RFP Stable Cells
<a href="#">SC066-R</a>	Mouse ES2 / RFP Stable Cells
<a href="#">SC066-TetR</a>	Mouse ES2 / TetR (Puro) Stable Cells
<a href="#">SC067-G</a>	Mouse SW403 / GFP Stable Cells
<a href="#">SC067-Luc</a>	Mouse SW403 / Luciferase Stable Cells
<a href="#">SC068-G</a>	Mouse PANC-1 / GFP (Puro) Cell Line
<a href="#">SC068-LG</a>	Mouse PANC-1 / Luciferase & GFP (Puro) Cell Line
<a href="#">SC068-Luc</a>	Mouse PANC-1 / Luciferase (Puro) Cell Line
<a href="#">SC068-R</a>	Mouse PANC-1 / RFP (Puro) Cell Line
<a href="#">SC069-G</a>	Mouse 786-O / GFP Cell Line
<a href="#">SC069-LG</a>	Mouse 786-O / Luciferase & GFP Cell Line
<a href="#">SC069-luc</a>	Mouse 786-O / Luciferase Cell Line
<a href="#">SC070-G</a>	Hela-nucGFP stable cells
<a href="#">SC070-R</a>	Hela-nucRFP stable cells
<a href="#">SC071-Neo</a>	Color Switch, CRE report cell line: Hela-loxP-GFP-RFP (Neo)
<a href="#">SC071-Puro</a>	Color Switch, CRE report cell line: Hela-loxP-GFP-RFP (Puro)
<a href="#">SC072-G</a>	Mouse T47D / GFP Stable Cells
<a href="#">SC072-LG</a>	Mouse T47D / Luciferase & GFP Stable Cells
<a href="#">SC072-Luc</a>	Mouse T47D / Luciferase Stable Cells
<a href="#">SC073-GB</a>	Mouse MCF10A / GFP (Bsd) Stable Cells
<a href="#">SC073-GP</a>	Mouse MCF10A / GFP (Puro) Stable Cells



<a href="#">SC073-Luc</a>	Mouse MCF10A / Luciferase (Puro) Stable Cells
<a href="#">SC074-GB</a>	Mouse SW1990 / GFP (Bsd) Stable Cells
<a href="#">SC074-GP</a>	Mouse SW1990 / GFP (Puro) Stable Cells
<a href="#">SC074-LG</a>	Mouse SW1990 / Luciferase & GFP (Puro) Stable Cells
<a href="#">SC074-Luc</a>	Mouse SW1990 / Luciferase (Puro) Stable Cells
<a href="#">SC075</a>	Mouse ACE2 (RFP) Expression in Hela Cell Line
<a href="#">SC076</a>	Mouse ACE2 (RFP) Expression in HEK293T Cell Line
<a href="#">SC076B</a>	Mouse ACE2 (GFP) Expression in Hela Cell Line
<a href="#">SC077</a>	COVID-19 Spike (S) Protein / Hela Cell Line
<a href="#">SC078-G</a>	Mouse Panc02 / GFP Stable Cell Line
<a href="#">SC078-Luc</a>	Mouse Panc02 / Luciferase (Firefly) Stable Cell Line
<a href="#">SC079-G</a>	Mouse MIA Paca-2 / GFP Stable Cells
<a href="#">SC079-LG</a>	Mouse MIA Paca-2 / Luciferase & GFP Stable Cells
<a href="#">SC079-LR</a>	Mouse MIA Paca-2 / Luciferase & RFP Stable Cells
<a href="#">SC079-Luc</a>	Mouse MIA Paca-2 / Luciferase Stable Cells
<a href="#">SC079-R</a>	Mouse MIA Paca-2 / RFP Stable Cells
<a href="#">SC080-G</a>	Mouse HT-29 / GFP Stable Cell Line
<a href="#">SC080-LG</a>	Mouse HT-29 / GFP & Luciferase Stable Cell Line
<a href="#">SC080-Luc</a>	Mouse HT-29 / Luciferase (Firefly) Stable Cell Line
<a href="#">SC081</a>	Inducible GFP & Luciferase Co-Expression HEK293 cell line
<a href="#">SC082</a>	HEK293 / Cas9 Expression Stable Cell Line
<a href="#">SC083</a>	HEK293 / h PDL1 Expression Stable Cells
<a href="#">SC084-G</a>	Mouse U2OS / GFP Stable Cells
<a href="#">SC084-LG</a>	Mouse U2OS / Luciferase & GFP Stable Cells



<a href="#">SC084-Luc</a>	Mouse U2OS / Luciferase Stable Cells
<a href="#">SC085-LG</a>	Mouse SHP-77 / <b>Luciferase</b> & <b>GFP</b> Stable Cells
<a href="#">SC085-LR</a>	Mouse SHP-77 / <b>Luciferase</b> & <b>RFP</b> Stable Cells
<a href="#">SC085-Luc</a>	Mouse SHP-77 / <b>Luciferase</b> Stable Cells
<a href="#">SC085-R</a>	Mouse SHP-77 / <b>RFP</b> Fluorescent Stable Cells
<a href="#">SC086</a>	CHO / CD19 & GFP Expression Stable Cell Line
<a href="#">SC087</a>	HEK293 / mouse CD19 Expression Stable Cell Line
<a href="#">SC088-Luc</a>	Mouse HCT116 / <b>Luciferase</b> Stable Cells
<a href="#">SC088-R</a>	Mouse HCT116 / <b>RFP</b> Fluorescent Stable Cells
<a href="#">SC088-G</a>	Mouse HCT116 / <b>GFP</b> Fluorescent Stable Cells
<a href="#">SC088-LG</a>	Mouse HCT116 / <b>Luciferase</b> & <b>GFP</b> Stable Cells
<a href="#">SC088-LR</a>	Mouse HCT116 / <b>Luciferase</b> & <b>RFP</b> Stable Cells
<a href="#">SC089-Luc</a>	Mouse HT22 / <b>Luciferase</b> Stable Cells
<a href="#">SC089-R</a>	Mouse HT22 / <b>RFP</b> Fluorescent Stable Cells
<a href="#">SC089-G</a>	Mouse HT22 / <b>GFP</b> Fluorescent Stable Cells
<a href="#">SC089-LG</a>	Mouse HT22 / <b>Luciferase</b> & <b>GFP</b> Stable Cells
<a href="#">SC090-Luc</a>	Mouse HT22 / <b>Luciferase</b> Stable Cells
<a href="#">SC090-G</a>	Mouse HT22 / <b>GFP Fluorescent</b> Stable Cells
<a href="#">SC091-Luc</a>	Mouse SK-Mel-5 / <b>Luciferase</b> Stable Cells
<a href="#">SC091-R</a>	Mouse SK-Mel-5 / <b>RFP</b> Fluorescent Stable Cells
<a href="#">SC091-G</a>	Mouse SK-Mel-5 / <b>GFP</b> Fluorescent Stable Cells
<a href="#">SC091-LR</a>	Mouse SK-Mel-5 / <b>Luciferase</b> & <b>RFP</b> Stable Cells
<a href="#">SC091-LG</a>	Mouse SK-Mel-5 / <b>Luciferase</b> & <b>GFP</b> Stable Cells
<a href="#">SC092-Luc</a>	Mouse MDA-MB-468/ <b>Luciferase</b> Stable Cells



**GenTarget Inc**

7930 Arjons Drive, Suite B  
San Diego, CA 92126, USA  
Phone: 1 (858) 2656446  
Email: [orders@gentarget.com](mailto:orders@gentarget.com)  
Fax: 1 (800) 3804198

<a href="#">SC092-R</a>	Mouse MDA-MB-468/ <b>RFP</b> Fluorescent Stable Cells
<a href="#">SC092-G</a>	Mouse MDA-MB-468/ <b>GFP</b> Fluorescent Stable Cells
<a href="#">SC092-LG</a>	Mouse MDA-MB-468/ <b>Luciferase</b> & <b>GFP</b> Stable Cells
<a href="#">SC092-LR</a>	Mouse MDA-MB-468 / <b>Luciferase</b> & <b>RFP</b> Stable Cells